



มูลนิธิกัลยาณมิตรเพื่อพัฒนาเด็กและเยาวชน  
The Fellowship Foundation for Child and Youth Development

## Work plan for children living in difficult circumstances



B.E. 2558

**Project: A plan to help children in difficult circumstances in Nong Khai.**  
**Researcher: The Fellowship Foundation for Child and Youth Development**

**1. General information about the Foundation**

<b>1.1 Organization Name</b>	<b>The Fellowship Foundation for Child and Youth Development</b>
<b>1.2 Address</b>	<b>No.319/28 Chonpruksa Village Soi 2 DPT Nongkhai 2017 Road, T.Nai Muang A.Muang Nongkhai 43000 Thailand</b>  <b>Telephone: +66 08 9539 9119 +66 09 1060 7954 Tel /Fax:+66 042 081799</b>
<b>1.3 Type of Organization</b>	<b>Foundation for Child and Youth Development</b>
<b>1.4 Who to contact</b>	<b>Mr. Neramit Vichienkrua: Project Director. Email: fcyd2014@gmail.com</b>
<b>1.5 Project Area</b>	<b>9 districts of Nong Khai province, namely Muang, Thabor, Phonpisai, Sra-kai, Fao-rai, Phoetak, Rattanawapee, Sirchiang-mai and Sangkom districts</b>
<b>1.6 The focus of the organization</b>	<b>The promotion of children's rights in education and health care</b>
<b>1.7 Project Name</b>	<b>Work plan for children living in difficult circumstances</b>
<b>1.8 Collaborative partners</b>	<b>Village health volunteers (VHV,) District offices of Thailand, Nong Khai office of public health, Nong Khai social development and human security office.</b>
<b>1.9 Duration of the project.</b>	<b>B.E. 2558</b>
<b>1.10 Project Coordinator</b>	<b>Ms. Saitong Chantaleuchai</b>

**2. Background and importance of the project.**

The Fellowship Foundation for Child and Youth Development's (FCYD) primary focus is on the development of children and youth of Thailand and key development issues in the areas of education and the intellectual, moral, and ethical improvement of Thailand. Under the management of the Foundation's board of directors and senior consultants from various fields we have four major projects helping children in difficult conditions; promoting educational opportunities to children and disadvantaged youth, to strengthen and improve student performance when learning a foreign language (Teach Thai Students) and strengthening integration and cooperation of communities for the development of children and youth. Our fourth project is to assist children living in difficult situations, which is detailed herein.

**Project to help children in difficult circumstances:** The Foundation acts as an organization that provides assistance in cooperation with all other relevant agencies, with a view to helping children in difficult conditions. Based on the principles of multidisciplinary practices such as; working with experts from various fields and consulting together to brainstorm ideas and guidelines for troubleshooting, we aim to strengthen the ability of families and communities to care for their children and achieve better living conditions. Often, when families are free from the various risks and vices associated with poverty, children gain access to social welfare benefits. This leads to a better quality of life.

**The Child Protection Act 2546** defines Children in Difficult Circumstances (CDC) as; children in poor families, children with divorced or separated parents, children who have been abandoned, have family obligations beyond their age, ability and intellect or are unable to improve their situation. The FCYD includes children who are affected by disease or disability and children of addiction or abuse in this definition for the purpose of this project.

The Thai Child Protection Act 2546 is currently in force with legislative measures to ensure that child care will be covered and children will have the opportunity to live peacefully, including disadvantaged children. However, there are many children who do not receive the benefits they are entitled to. This can be seen from the media. Often the news shows stories about children and young people living in poverty, child labor, orphaned due to an accident or abandoned with strangers. A Ministry of Social Development meeting, held on 6 November 2014 displayed data in order to find a solution for abandoned children. It found that between the years 2012 to 2014, there were 8 homes for abandoned children under the Department of Social Development and Human Security. In such numbers of 1,738 children, 465 children are abandoned. There are many factors that cause children in difficult circumstances to be abandoned such as unwanted pregnancy, premature parenthood, and divorce.



The Ministry of Social Development and Human Security found that in terms of the welfare of the people of Thailand, the assistance and benefits received for children and youth can be divided into several areas, such as counseling, aid in the form of goods or allowance, orphanages or respite care, work funds, and temporary foster care. To ensure welfare is provided in the most appropriate manner we need to include children in the process. The most important thing is that parents or community members care enough pay attention to the children's problems and have a real desire to help children. The problem is that when children are in difficult circumstances it is often because parents are not giving enough attention to them. This means their quality of life does not change.

In order for children to receive help from related public and private development agencies and correct aid from the government the FCYD will assist with this plan to help children in difficult circumstances in Nong Khai. We will serve as an agent to assist and cooperate with other agencies. We will ensure children in difficult conditions receive appropriate assistance according to their rights. This will create a better quality of life for these children. In addition, the foundation will support the children of migrant workers who are in Nong Khai.

### 3. The situation of children in difficult conditions.

The problematic truth of this situation is that children in difficult circumstances are something that many people overlook. The children's difficulty is regarded as something distant that does not affect everyday people. We regard these children with a sense of pity, but we only allow this feeling build up in our minds, before letting it go. However, there are some people who put those feelings towards something substantial. With the help of donations, such as appliances, toys, etc., we can assist these children to have a better life. Nevertheless this only improves their fullness of life in the short term. When these material things are used, they still have the same lifestyle. This is a pervasive issue surrounding children in difficult circumstances in Thailand.



All adults in society need to pay more attention to these children to help find a solution. This is a social problem that affects the growth and development of our children. The quality of this country's future development will be dependent on the younger generation -as the saying goes:

"Children are the future of the nation ". If these children are struggling with daily life they do not hold much hope for the future. Helping to give these children a better quality of life is important for everyone to be aware of in the long term. When helping children in difficult circumstances it is necessary to have experts from various fields to collaborate for the best effect. This problem is not only related to one aspect of life. There are difficulties in societal membership



and surrounding equality. Many children are affected by several problems such as abuse, health problems and issues with education.

If people see the importance of improving the quality of life of these children, children who are poor, will return to society and have rights equal with others. One day, pictures of children struggling will be missing from the picture of Thailand.

### 4. Objectives

To survey and collect data of children in difficult circumstances in the district of Nong Khai, in collaboration with a network of volunteers from the district and its related entities. To assist the process of a major multidisciplinary approach and provide assistance appropriate to the situation of children

**5. Target** Children who have been selected as being in difficult circumstances and deserving of support.



## 6. Location and period of operation.

The project will be implemented in nine districts of the province, namely Muang, Thabor, Phonpisai, Sra-kai, Fao-rai, Phoetak, Rattanawapee, Sirchiang-mai and Sangkom districts.

The program is a long term partnership to help children in difficult conditions. However, to ensure accuracy and consistency with the operation of other cooperating organizations, this program is managed yearly in terms of monitoring and evaluation.

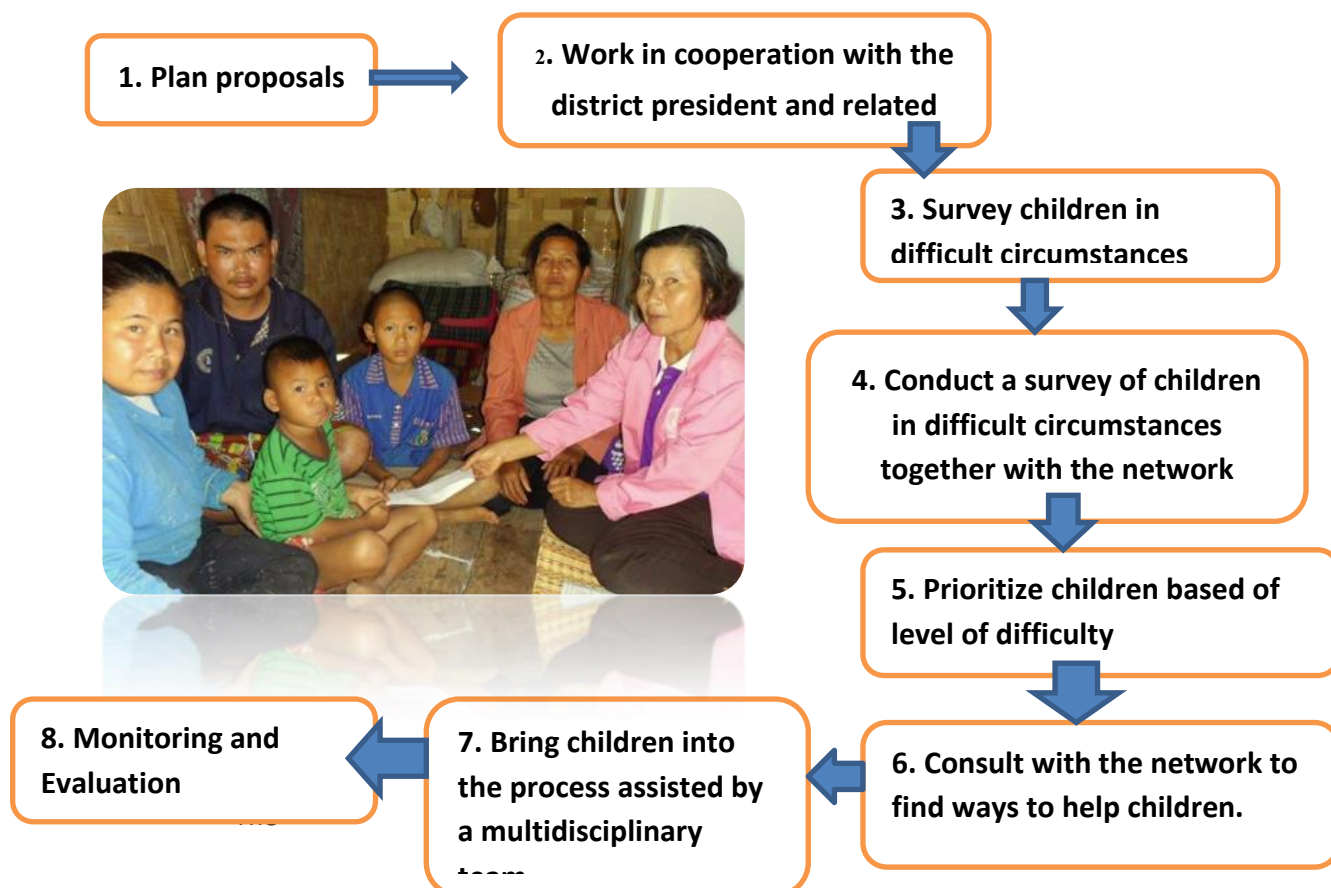
## 7. Networking

The trustees will act collaboratively in all respects with an academic management support team and other relevant agencies. This is to ensure cooperation in activities which assist children in difficult circumstances and the tracking and reporting of progress over time. There will be expansion of cooperation in the future if there is enough funding to expand the operations.

### The foundation plans to work in collaboration with;

- The Chairman of the Department in each district including the chief academic and community leaders, village headman and the village committee
- Office of Provincial Public Health, Nong Khai Province
- Office of Social Development and Human Security.
- Orphanages in Nong Khai, including Friends for All Children Foundation, Nong Khai Home for Boys, SOS Children's Villages, Nong Khai child development and rehabilitation shelters

## 8. Method



Foundation's goal is to collaborate with a network of volunteers in each district of Nong Khai to gather information about children difficult circumstances in the area. The foundation will consider the data and provide assistance as appropriate. We will employ process-oriented assistance in a multidisciplinary collaboration between the family and related community agencies to ensure the assistance is sustainable. The method of operation can be summarized as follows.

- 8.1 Draft proposals to inform the co-operative network about being a part of helping children in difficult conditions.
- 8.2 Collaborate with a network of volunteers in the district and area and with agencies such as the Nong Khai Office of Public Health, the Nong Khai Office of Social Development and Human Security, and children's homes in Nong Khai, etc.
- 8.3. Conduct a survey of children in difficult circumstance
- 8.4 Join the volunteer network to further the survey of children in difficult circumstances in the district. Using surveys to collect information about children is key to this mission.
- 8.5 After the collecting the names and details of the children who need assistance, the Foundation will conduct visits to the children and families in the area for interviews and observation. After this operation is completed, the Trustees and the network will consider the condition of the child and, according to level of difficulty, prioritize those who need the most help.
- 8.6 Consultation with the network to find ways to help children. As a way to help provide the appropriate conditions, the difficulty of each child is measured in order to provide the right amount of goods or commodities.
  - Investigating the parents situation.
  - Teaching children about their rights
  - Coordination with the relevant authorities for help in finding a foster family or adoptive parents, etc.
- 8.7 After considering how to best provide assistance, the Foundation will collaborate with other related agencies to bring children into the process. We will be helped by relevant professionals, such as a host family in the event of an orphan or neglect, therapy and rehabilitation centers in the case of addicts, taking the kids in to protective care in the case of assault or abuse, and so on.
- 8.8 After assisting the children. The completed project will be monitored and evaluated to discover the results and impact of the project. In addition, the Foundation plans to meet with various charitable foundations; Friends for All Children Foundation, Home for Boys, SOS home, Nong Khai Child Development and Rehabilitation Centre, Children's Homes, and Family Offices, to assist the children in orphanages themselves. The foundation may assist with money or supplies as required and as appropriate.



## 9. Expected benefits

- 1) To know the names and information of children in difficult circumstances who need help at various levels.
- 2) For children who live in difficult circumstances to be aided by the benefits that they receive while meeting the requirements of the Department of Social Development and Welfare.
- 3) For cooperation between the family of the children, community agencies, and the foundation to result in harmony in the community. This is an important goal of the Foundation and will be one of the guidelines for sustainable development.

## 10. The budget for the plans implementation

The Foundation is seeking support from other agencies, public, private, domestic and international in order to help children in difficult conditions in the various districts of Nong Khai. The budget cannot be clearly identified as it requires clear data about the number of children in need of assistance. The need to get a detailed assessment of children in difficult circumstances is of foremost importance, including the need to consider whether to provide assistance in each circumstance.

\*\*\* Note: The table below is only a hypothesis. The budget for the project is based on the number of children who have been assisted. If there are more children than this hypothesis, it will be necessary to adjust the budget to help ensure suitability

Components of the project	Budget (THB)
<b>Part one</b> The goal of the foundation is to assist 10 children in each district (9 districts) which equals 90 children. For each child assistance of no more than x,xxx baht. Therefore, it is $90 \times x,xxx \Rightarrow xxx,xxx$ baht.	Xxx,xxx THB
<b>Part two</b> Project management Budget The project coordinators travel expenses during the monitoring and evaluation of projects.	JPF responsibility
<b>Total budget (THB)</b>	Xxx,xxx THB

## 11. Type of Assistance

The requirements of the Department of Social Development and Welfare and the Ministry of Social Development do not specify the nature of assistance to children in difficult conditions. The foundation has planned various ways to assist these children which can be summarized as follows:

- In the case of poor families with child workers or child poverty the foundation can help by giving advice and finding information about the parents. We can distribute funds, goods, and educational equipment without exceeding 3,000 Baht per family.
- In the case of orphans or neglected children, the Foundation will coordinate with relevant agencies such as the Office of Public Health, Social Development and Human Security. We will inform agencies about the lack of proper care for children and move children to a residential home while a solution is being formed. This could be a foster family or adoptive parents.
- If the child is unwell, the Foundation will collaborate with appropriate agencies to provide assistance for the hospital journey. This may include the parent's expenses while the child is in hospital.

- In the case of children with a drug addiction, including children at risk of offending the Foundation will help by providing advice to parents to help them understand the problem and remedy it themselves. We will talk with village leaders and village committees to help solve the drug problem in the community and provide the children with vocational training. We will work in cooperation with other agencies, such as the drug counseling center and treatment and rehabilitation centers. We will consider bringing the child into a treatment centre if necessary.

- In the case of abused children or children at risk of abuse the foundation will work to provide treatment, rehabilitation and psychological support for the family with the support of the multidisciplinary team. Separating the children from their families and providing them with a safe house or foster family may be considered. This would require further legal action.

In addition to this assistance we will work with the community to monitor and follow up periodically. We will ask for cooperation from the Village Council and community leaders to ensure that children in difficult conditions have an improved quality of life.

## **12. Monitoring and Evaluation**

The Foundation will monitor and evaluate the implementation of the project throughout its duration and until it is finished. Discussions within the co-operative network will be used to evaluate the survey, including interviews and observations of children in real time. The monitoring and evaluation of the project can be summarized as follows.

12.1-During this phase of the project the Foundation will continue to liaise with other agencies and will be involved in ensuring networking and cooperation between the Foundation's volunteer networks for each district in Nong Khai. The FCYD will also liaise with the village headman, the village committee and community leaders to jointly discuss how to help children in difficult circumstances.

12.2 During the project implementation phase the foundation will begin to recruit children and prioritize them based on the level of the difficulty. The foundation will assess preliminary data from the survey and will consider any information from cooperative networks, assuming these children are in difficulty as well. The foundation will travel to interview and observe the child in the family and the village in real time to assess the risk factors of the environment, including the family and community. The foundation is interested in the interaction within the community and the social system that supports children. Assessment of trends in the life of a child after being rescued will be included in the data. After assessing the of various factors a plan to help children will be formulated in the following order.

12.3 After completion of the project with the network foundation we will conduct a visit to the school and community to assess the progress of the plan, including the child's wellbeing. We anticipate that the children will have received help and a better quality of life. The foundation will evaluate the child's behavior, their ability to adapt in society with others and whether they are behaving properly or not. The foundation will evaluate the assistance of the community, the reaction of the people in the community to the children, etc. When children get proper help and have community assistance their quality of life, it is likely to be better. This would show that the program was successful.



## Appendix

### Plan for project implementation

Timeline	Plan	Agencies
	- Draft proposals to inform the co-operative network about being a part of helping children in difficult conditions.	
	- Collaborate with a network of volunteers in the district and area and with agencies such as the Nong Khai Office of Public Health, the Office of Social Development and Human Security and orphanages in Nong Khai, etc	- Chairman of the Department. -Health Office - Social Development and Human Security Office
	- Foundation conducts a survey of children in difficult conditions.	Chairman of the Department and the areas support network
	- The Foundation will join the volunteer network and conduct a survey of children in difficult circumstances in the district.  -Using surveys to collect information about children is key to this mission.	-Chairman of the Department. -Village head -School administrators in the area -Village committee -Multidisciplinary team.
	- After the collecting the names and details of the children who need help the Foundation will conduct visits the children and families in the area for interviews and observation. After this operation is completed, the Trustees and the network will consider the condition of the child and, according to level of difficulty, prioritize those who need the most help.	- Chairman of the Department. - Headman - Local school administrators - Village Council
	- Consultation with the network to find ways to help children. As a way to help provide the appropriate conditions, the difficulty of each child is measured as way to provide the right amount of goods or commodities. -Finding information about the parents activities. - Training children as advocates for their own wellbeing - Coordination with the relevant authorities for help in finding a foster family or adoptive parents, etc.	- Health Office - Social Development and Human Security office - Multidisciplinary team
	-After considering how to best provide help the Foundation will collaborate with other related agencies to bring children into the assistance process. We will be helped by relevant professionals, such as a host family in the event of an orphan or neglect, therapy and rehabilitation centers in the case of addicts, taking the kids in to protective care in the case of assault or abuse, and so on.	- Health Office - Social Development and Human Security. - Multidisciplinary team
	- Monitoring and evaluation	-Chairman of the Department. -Village head -School administrators in the area -Village committee.

\*\*\* Note - the time period of the plan can be adjusted as appropriate.